

ARCHITECT:

PROJECT:

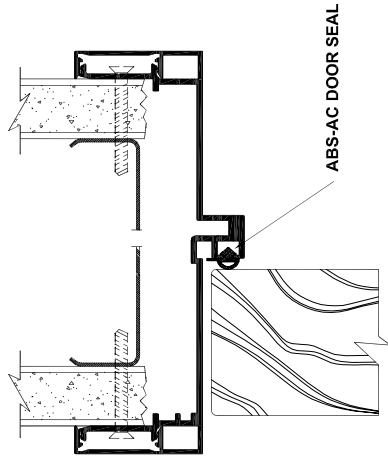
DISTRIBUTOR:

DATE:

SHEET:

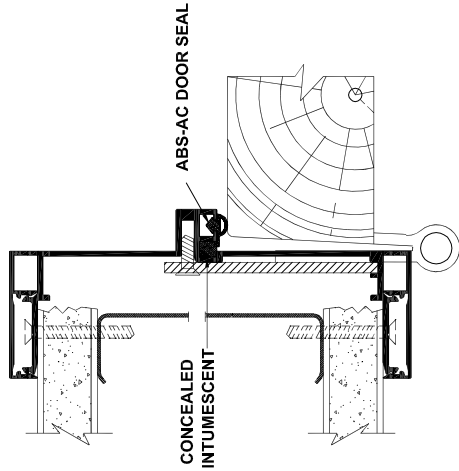
DOORMERICA
 ABS - Architectural Components
 8401 Rovana Cir, Sacramento CA, 95828
 Toll Free Number: (866) 566-2161
 Phone Main: (916) 388-2161
 Fax: (916) 388-9336

(E) 3-3/4" WALL - 1-1/2" TRIM



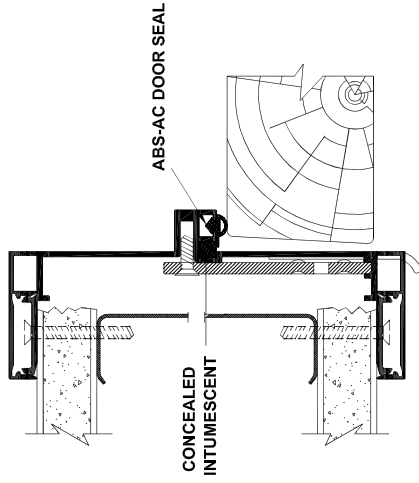
A

DOOR FRAME HEADER



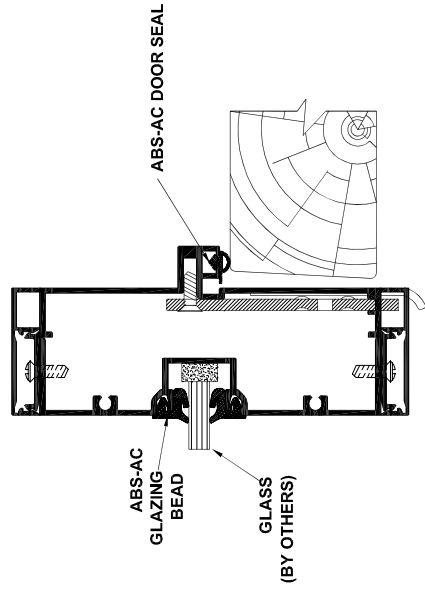
B

DOOR FRAME HINGE JAMB



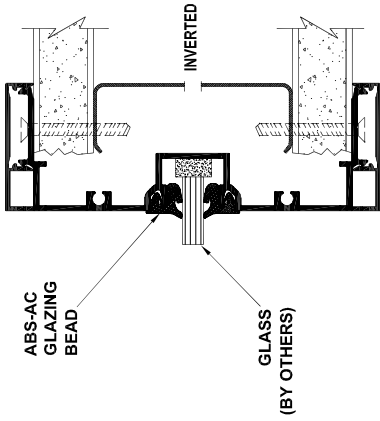
C

DOOR FRAME AT STRIKE JAMB
NOTE: EXTENDED LIP STRIKE REQUIRED



D

STRIKE JAMB & S.L. MULLION W/ 1-1/2" FACE
NOTE: EXTENDED LIP STRIKE REQUIRED



F

GLAZING RAIL

SILL BASE ON DRYWALL PARTITION

E

ARCHITECT:

PROJECT:

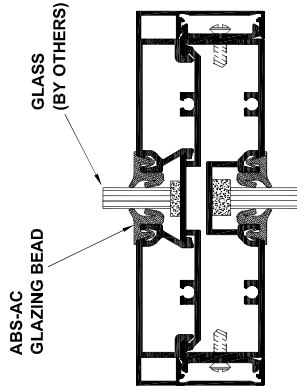
DISTRIBUTOR:

DATE:

SHEET:

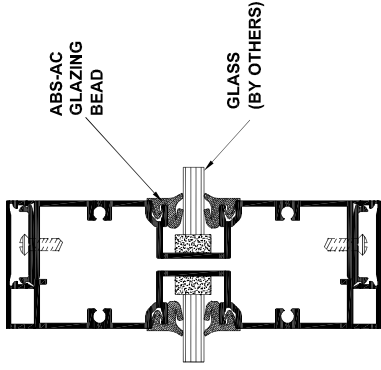
DOORMERICA
 ABS - Architectural Components
 8401 Rovana Cir. Sacramento CA, 95828
 Toll Free Number: (866) 566-2161
 Phone Main: (916) 388-2161
 Fax: (916) 388-9336

(E) 3-3/4" WALL - 1-1/2" TRIM



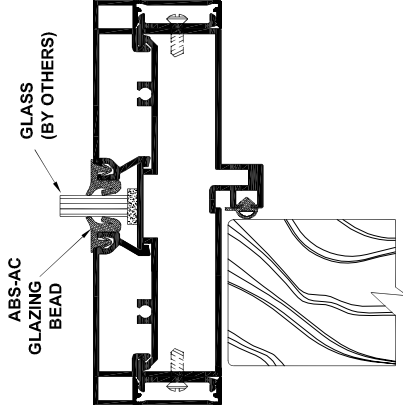
G

HORIZONTAL MULLION W/ 1-1/2" FACE



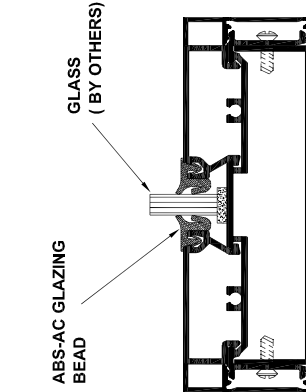
H

VERTICAL MULLION W/ 1-1/2" FACE



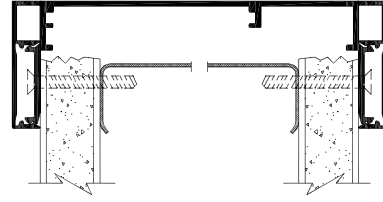
I

TRANSOM HEADER W/ 1-1/2" FACE



J

SILL BASE WITH RETAINER



K

CASED OPENING